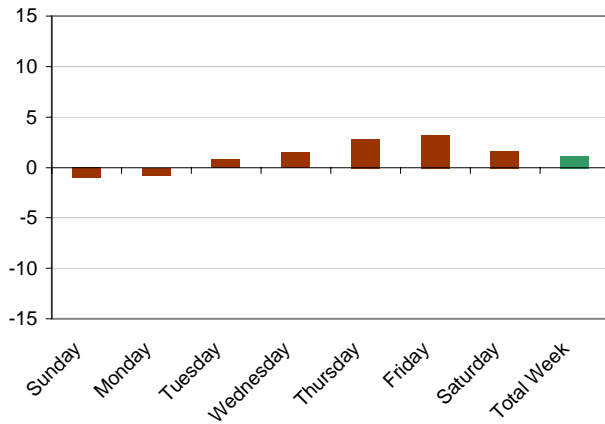


Weekly Lodging Report - Performance Analysis - Week: 05/01/05 - 05/07/05

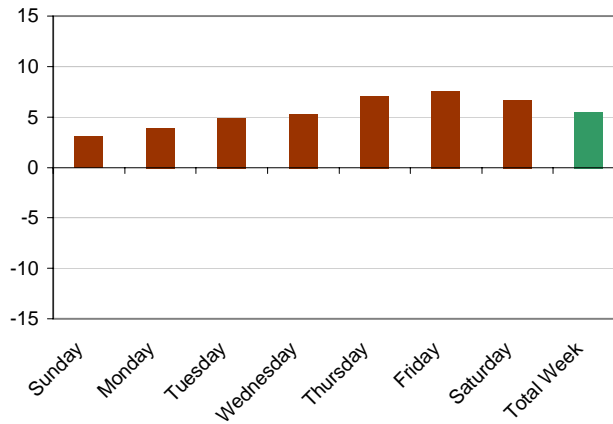


Segment	Sunday		Monday		Tuesday		Wednesday		Thursday		Friday		Saturday		Total Week	
	TY	LY	TY	LY	TY	LY	TY	LY	TY	LY	TY	LY	TY	LY	TY	LY
	5/1	5/2	5/2	5/3	5/3	5/4	5/4	5/5	5/5	5/6	5/6	5/7	5/7	5/8	Week	Week
	2005	2004	2005	2004	2005	2004	2005	2004	2005	2004	2005	2004	2005	2004	2005	2004
	Occup	%Chg	Occup	%Chg	Occup	%Chg	Occup	%Chg	Occup	%Chg	Occup	%Chg	Occup	%Chg	Occup	%Chg
United States	47.2	-1.0	59.8	-0.7	65.6	0.8	66.4	1.5	62.6	2.8	65.4	3.2	63.9	1.6	61.5	1.2
	ADR	%Chg	ADR	%Chg	ADR	%Chg	ADR	%Chg	ADR	%Chg	ADR	%Chg	ADR	%Chg	ADR	%Chg
United States	90.89	3.1	92.34	3.9	92.87	4.9	91.91	5.3	90.47	7.1	86.92	7.6	87.42	6.7	90.37	5.5
	RevPAR	%Chg	RevPAR	%Chg	RevPAR	%Chg	RevPAR	%Chg	RevPAR	%Chg	RevPAR	%Chg	RevPAR	%Chg	RevPAR	%Chg
United States	42.90	2.0	55.18	3.1	60.91	5.6	61.04	7.0	56.65	10.1	56.86	11.1	55.83	8.4	55.62	6.8

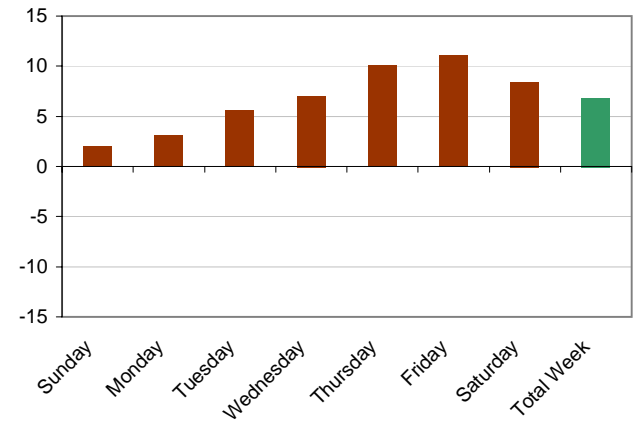
Occupancy Variance (%) - This Year vs. Last Year



ADR Variance (%) - This Year vs. Last Year



RevPAR Variance (%) - This Year vs. Last Year



Source: Smith Travel Research