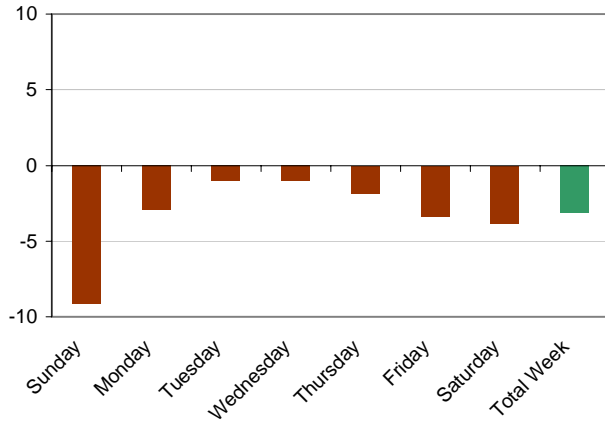


## Weekly Lodging Report - Performance Analysis - Week: 9/24/06 - 9/30/06

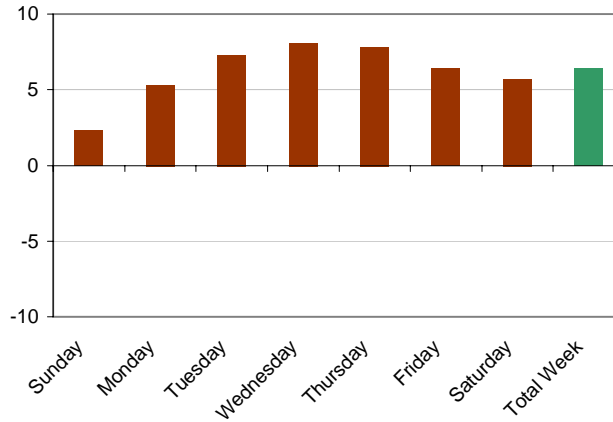


Segment	Sunday		Monday		Tuesday		Wednesday		Thursday		Friday		Saturday		Total Week			
	TY	LY	TY	LY	TY	LY	TY	LY	TY	LY	TY	LY	TY	LY	TY	LY		
	9/24	9/25	9/25	9/26	9/26	9/27	9/27	9/28	9/28	9/29	9/29	9/30	9/30	10/1	Week	Week		
	2006	2005	2006	2005	2006	2005	2006	2005	2006	2005	2006	2005	2006	2005	2006	2005		
	Occup	%Chg	Occup	%Chg	Occup	%Chg	Occup	%Chg	Occup	%Chg	Occup	%Chg	Occup	%Chg	Occup	%Chg		
<b>United States</b>	48.1	-9.1	64.6	-2.9	70.9	-1.0	71.3	-1.0	66.4	-1.8	69.6	-3.3	72.6	-3.8	66.2	-3.1		
	ADR	%Chg	ADR	%Chg	ADR	%Chg	ADR	%Chg	ADR	%Chg	ADR	%Chg	ADR	%Chg	ADR	%Chg		
<b>United States</b>	93.78	2.3	99.64	5.3	102.25	7.3	102.26	8.1	99.62	7.8	95.82	6.4	95.93	5.7	98.68	6.4		
	RevPAR	%Chg	RevPAR	%Chg	RevPAR	%Chg	RevPAR	%Chg	RevPAR	%Chg	RevPAR	%Chg	RevPAR	%Chg	RevPAR	%Chg	RevPAR	%Chg
<b>United States</b>	45.11	-7.0	64.38	2.4	72.51	6.3	72.95	7.1	66.19	6.0	66.66	2.8	69.60	1.5	65.34	3.1		

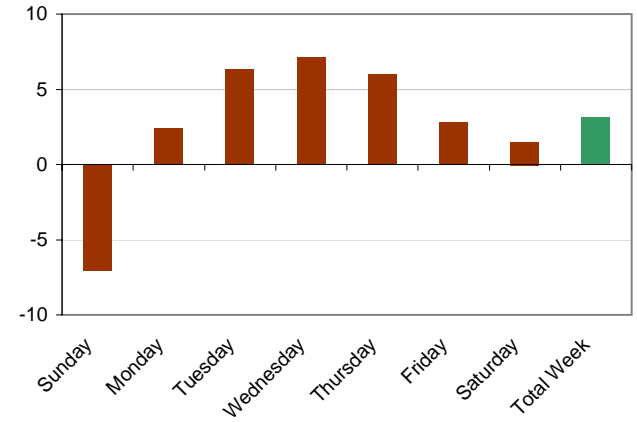
**Occupancy Variance (%) - This Year vs. Last Year**



**ADR Variance (%) - This Year vs. Last Year**



**RevPAR Variance (%) - This Year vs. Last Year**



Source: Smith Travel Research