

Weekly Lodging Report - Performance Analysis - Week: 10/31/04 - 11/06/04

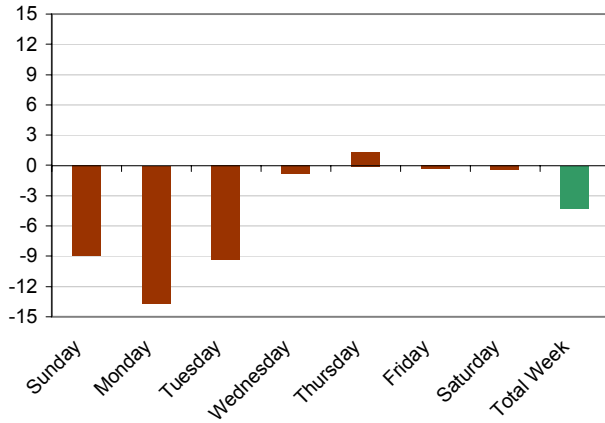


Segment	Sunday		Monday		Tuesday		Wednesday		Thursday		Friday		Saturday		Total Week	
	TY	LY	TY	LY	TY	LY	TY	LY	TY	LY	TY	LY	TY	LY	TY	LY
	10/31 2004	11/2 2003	11/1 2004	11/3 2003	11/2 2004	11/4 2003	11/3 2004	11/5 2003	11/4 2004	11/6 2003	11/5 2004	11/7 2003	11/6 2004	11/8 2003	Week 2004	Week 2003
United States	39.8	-8.9	49.4	-13.6	57.8	-9.3	65.7	-0.8	64.5	1.3	68.6	-0.3	70.5	-0.4	59.4	-4.2

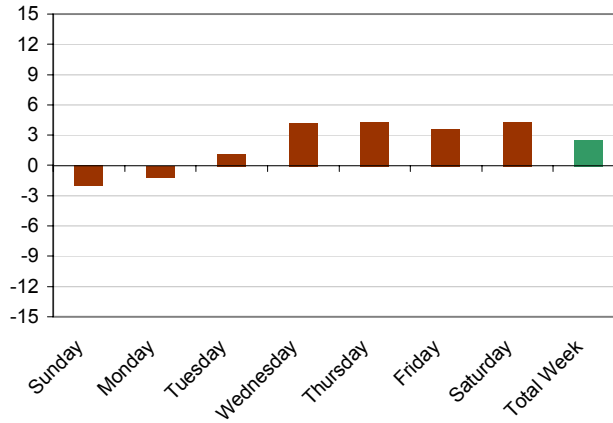
United States	ADR	%Chg	ADR	%Chg	ADR	%Chg	ADR	%Chg	ADR	%Chg	ADR	%Chg	ADR	%Chg	ADR	%Chg
United States	81.41	-2.0	83.50	-1.1	86.35	1.2	89.49	4.2	89.99	4.3	86.71	3.6	88.00	4.3	86.93	2.5

United States	RevPAR	%Chg	RevPAR	%Chg	RevPAR	%Chg	RevPAR	%Chg	RevPAR	%Chg	RevPAR	%Chg	RevPAR	%Chg	RevPAR	%Chg
United States	32.43	-10.6	41.29	-14.6	49.88	-8.2	58.79	3.4	58.02	5.5	59.48	3.3	62.00	3.7	51.68	-1.7

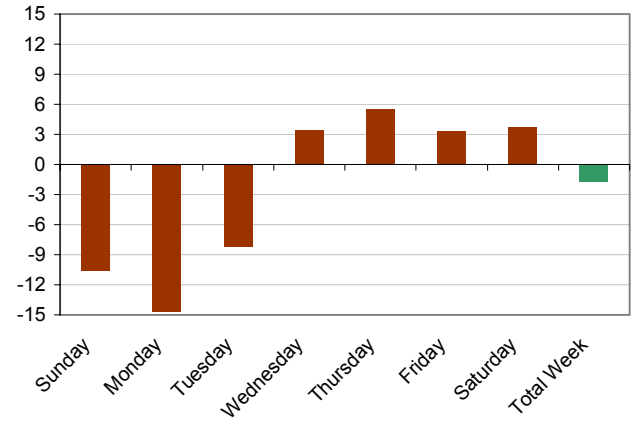
Occupancy Variance (%) - This Year vs. Last Year



ADR Variance (%) - This Year vs. Last Year



RevPAR Variance (%) - This Year vs. Last Year



Source: Smith Travel Research