



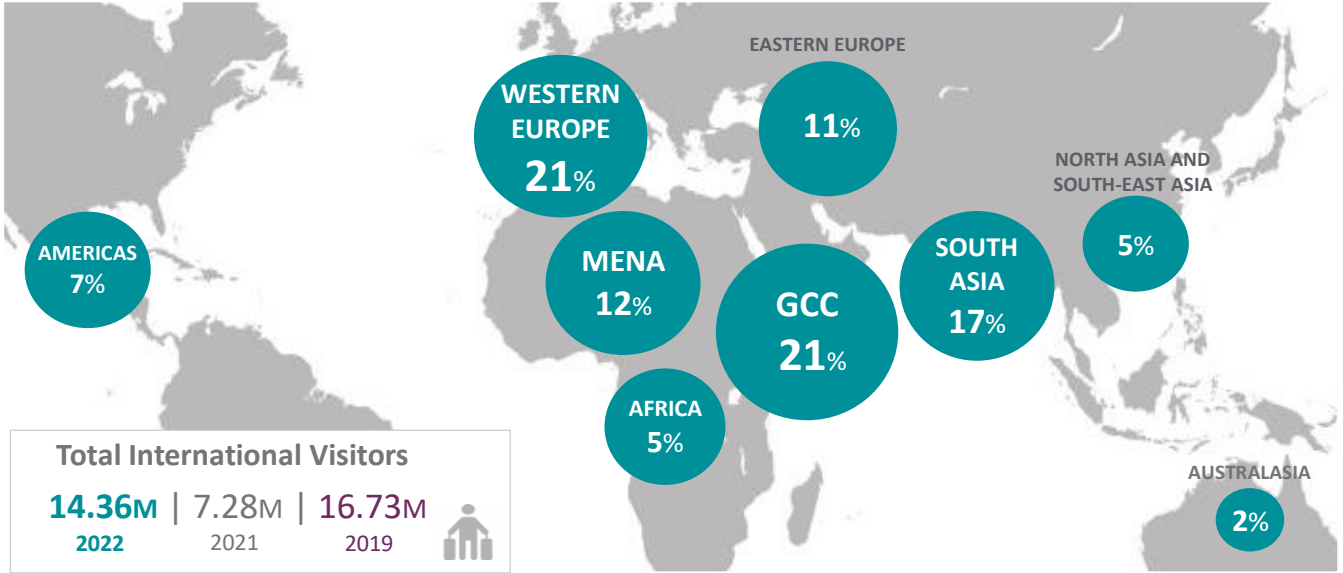
# TOURISM SECTOR PERFORMANCE

## PROGRESS AND TRENDS

2022 JAN - DEC REPORT | DUBAI DEPARTMENT OF ECONOMY AND TOURISM  
SECTOR STAKEHOLDER REPORT

# Visitor Performance by Source Market – Jan – Dec 2022

## SOURCE OF VISITORS BY REGION (% Jan - Dec 2022)

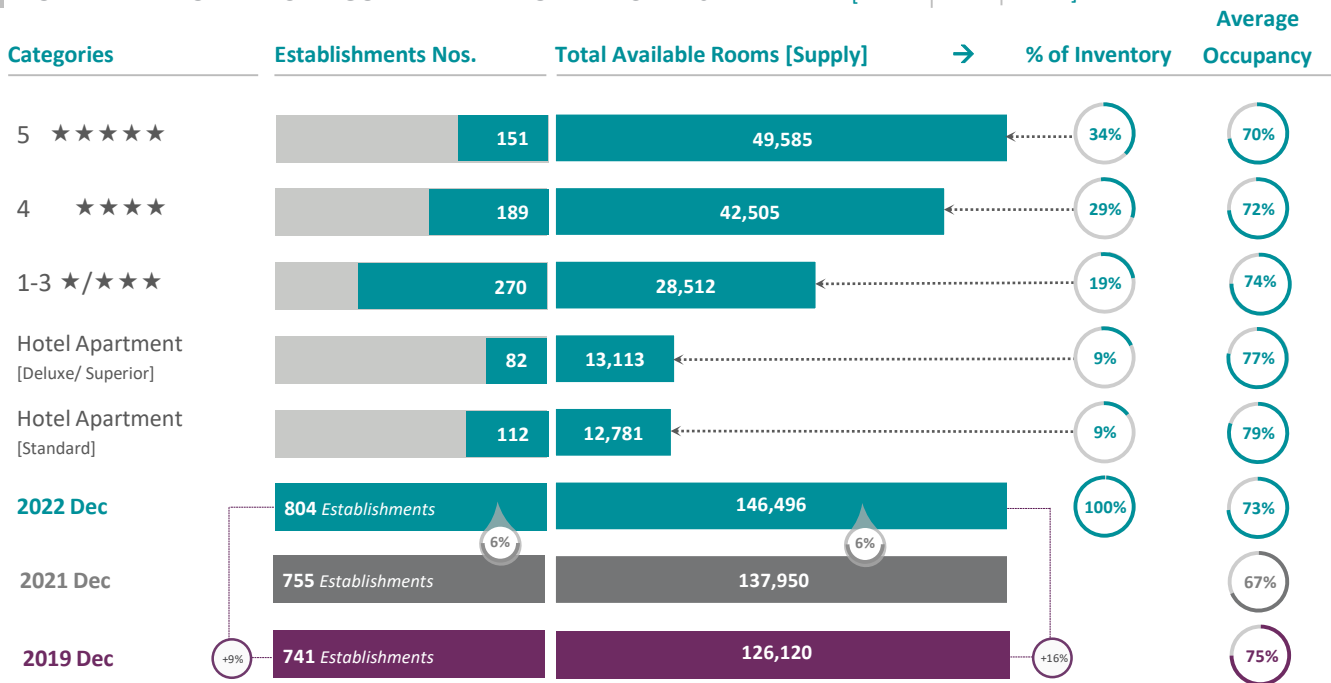


Department of Economy and Tourism - Confidential

# Accommodation Supply and Demand – Jan – Dec 2022

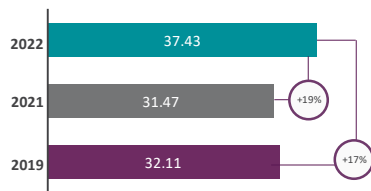
## HOTEL INVENTORY BY CATEGORY AND PERFORMANCE KPIS

[ 2022 | 2021 | 2019 ]



## DUBAI VISITORS DRIVE ECONOMIC GROWTH IN HOTELS (YOY Jan – Dec)

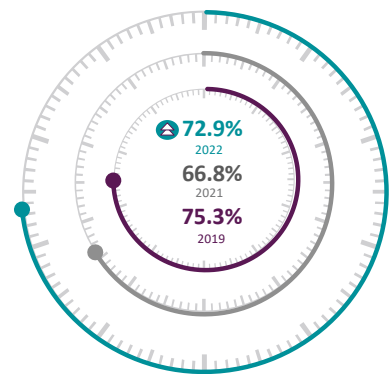
Occupied Room Nights <sup>Million</sup>



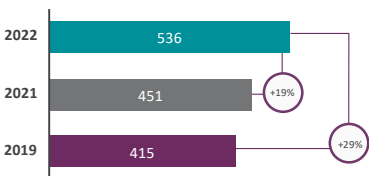
Guests' Length of Stay <sup>Nights</sup>



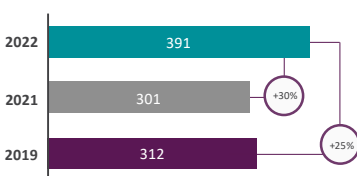
Average Occupancy <sup>2</sup>



Average Daily Rate <sup>AED</sup>



Rev per Avail. Room <sup>AED</sup>



Notes:

- (1) Pre-pandemic year for comparison
- (2) Average Occupancy in Jan-Dec '22 only (-2.4) ppt less than pre-pandemic level despite the +16% increase in room inventory
- (3) Nights and revenue figures are reflective of reported hotel data including residents and hoppers
- (4) Establishment Nos and Total Available Rooms are reflective as the actual numbers end of Dec 2022
- (5) Occupancy is reflective of the YTD status and hence not directly corresponding to the monthly capacity (rooms available) depicted in the data alongside

## DUBAI TOURISM SECTOR 2022 PERFORMANCE

### Data Interpretation and Definition Reference:

All reported information follows the same methodology as the Tourism Performance report published in Q1-2015. International guests are reflective of overnight tourists to Dubai that are adjusted downward for leakage from Dubai Airport to other emirates (travellers not spending a night in Dubai), residents staying in hotels (noting that all reported hotel information includes this population), hotel hoppers that are defined as travellers checking in/re-checking in within a 48 hour window; and adjusted upwards for travellers entering through other emirates as their first port of entry and those staying with friends and family estimated from DIVS survey data [field surveys conducted by Department of Economy and Tourism].

### JAN-DEC 2022

*Published on January 19, 2023*

### Copyright: Tourism Intelligence & Performance [DET]

All rights reserved. No part of this report may be reproduced, distributed, copied or transmitted in any form or by any means (electronic, mechanical, photocopying, recording or otherwise) without the prior written permission of Dubai Department of Economy and Tourism - DET. For permission, please send an email to [strategy@dubaitourism.ae](mailto:strategy@dubaitourism.ae), along with your request detailing the specific information you wish to reproduce, distribute, copy or transmit. Contents of this report are deemed accurate at the time of publishing and will be subject to change without notice.

